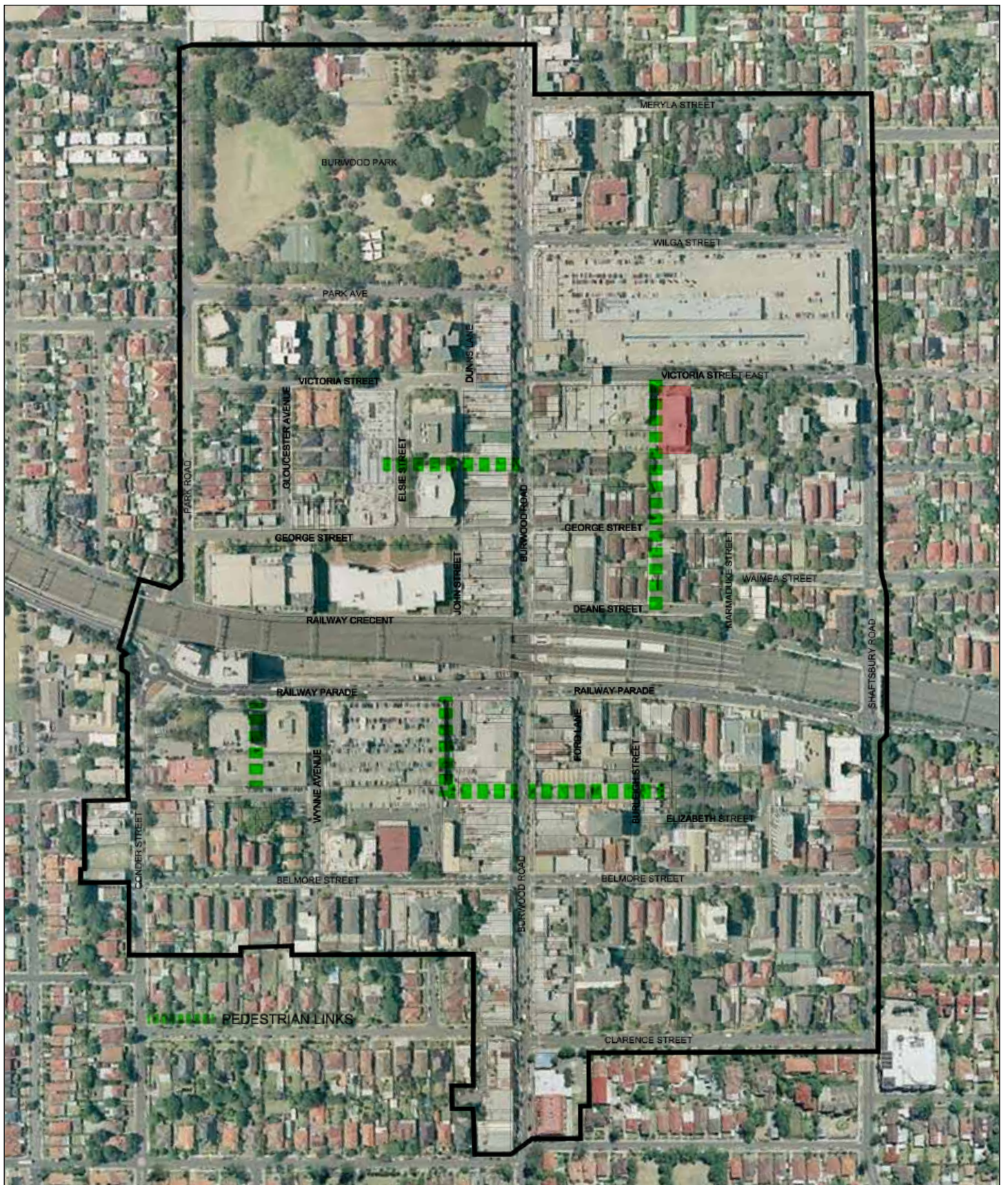


FIGURE 4.1.4 BURWOOD TOWN CENTRE DCP NO.36

**FIGURE 1**  
LOCATION OF PEDESTRIAN LINKS - DCP PART NO. 36 - BURWOOD TOWN CENTRE

PREPARED FOR - OLSSON & ASSOCIATES ARCHITECTS PTY LTD





**FIGURE 2**  
AERIAL PHOTO SHOWING LOCATION OF PEDESTRIAN LINKS  
FROM DCP PART NO. 36 - BURWOOD TOWN CENTRE  
(NOTE: DCP SHOWS LINKS BEING 12.0M WIDE)

PREPARED FOR - OLSSON & ASSOCIATES ARCHITECTS PTY LTD

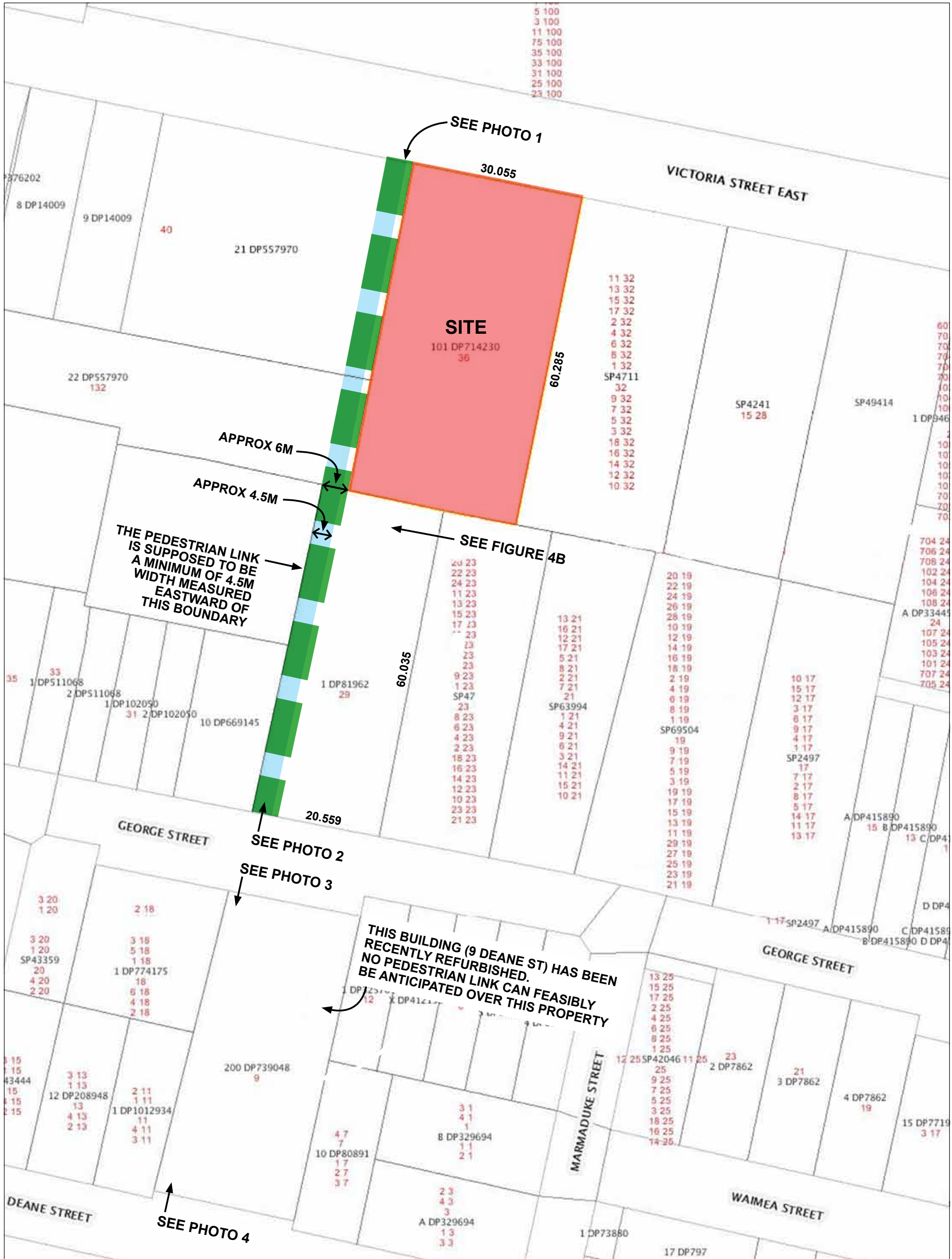




**FIGURE 3**  
DETAIL AERIAL PHOTO SHOWING INTENDED LOCATION OF PEDESTRIAN LINKS  
FROM DCP PART NO. 36 - BURWOOD TOWN CENTRE

PREPARED FOR - OLSSON & ASSOCIATES ARCHITECTS PTY LTD





SOURCE: <http://lfe.maps.nsw.gov.au/>

**FIGURE 4A**  
6.0M WIDE PEDESTRIAN LINK AS INTENDED BY THE DCP  
PREPARED FOR - OLSSON & ASSOCIATES ARCHITECTS PTY LTD











PHOTO 1. LOOKING SOUTH FROM VICTORIA ST EAST ONTO LOT 101 DP 714230 (LEFT) AND LOT 21 DP 557970 (RIGHT)



PHOTO 2. LOOKING NORTH ONTO LOT 1 DP 81962



PHOTO 3. LOOKING SOUTH FROM GEORGE ST ONTO LOT 200 DP 739048



PHOTO 4. LOOKING NORTH FROM DEANE ST ONTO LOT 200 DP 739048

SOURCE: GOOGLE MAPS 2012

**FIGURE 5**  
AERIAL AND STREET VIEW PHOTOGRAPHS OF SITE AND SURROUNDS SHOWING 6.0M WIDE INTENDED PEDESTRIAN LINK  
PREPARED FOR - OLSSON & ASSOCIATES ARCHITECTS PTY LTD





SOURCE: <http://lite.maps.nsw.gov.au/>

**FIGURE 6**  
AERIAL PHOTO SHOWING 6.0M WIDE INTENDED PEDESTRIAN LINK  
PREPARED FOR - OLSSON & ASSOCIATES ARCHITECTS PTY LTD





A. BURWOOD STATION TO WESTFIELD BURWOOD RD ENTRANCE = 297M



B. BURWOOD STATION TO WESTFIELD VICTORIA ST ENTRANCE = 301M



C. SOUTHERN END OF MARY ST TO WESTFIELD BURWOOD RD ENTRANCE = 321M





D. BURWOOD STATION TO WESTFIELD VICTORIA ST ENTRANCE VIA MARY ST AND PROPOSED PEDESTRIAN LINK= 400M



E. SOUTHERN END OF MARY ST VIA PROPOSED PEDESTRIAN LINK TO WESTFIELD VICTORIA ST ENTRANCE = 319M

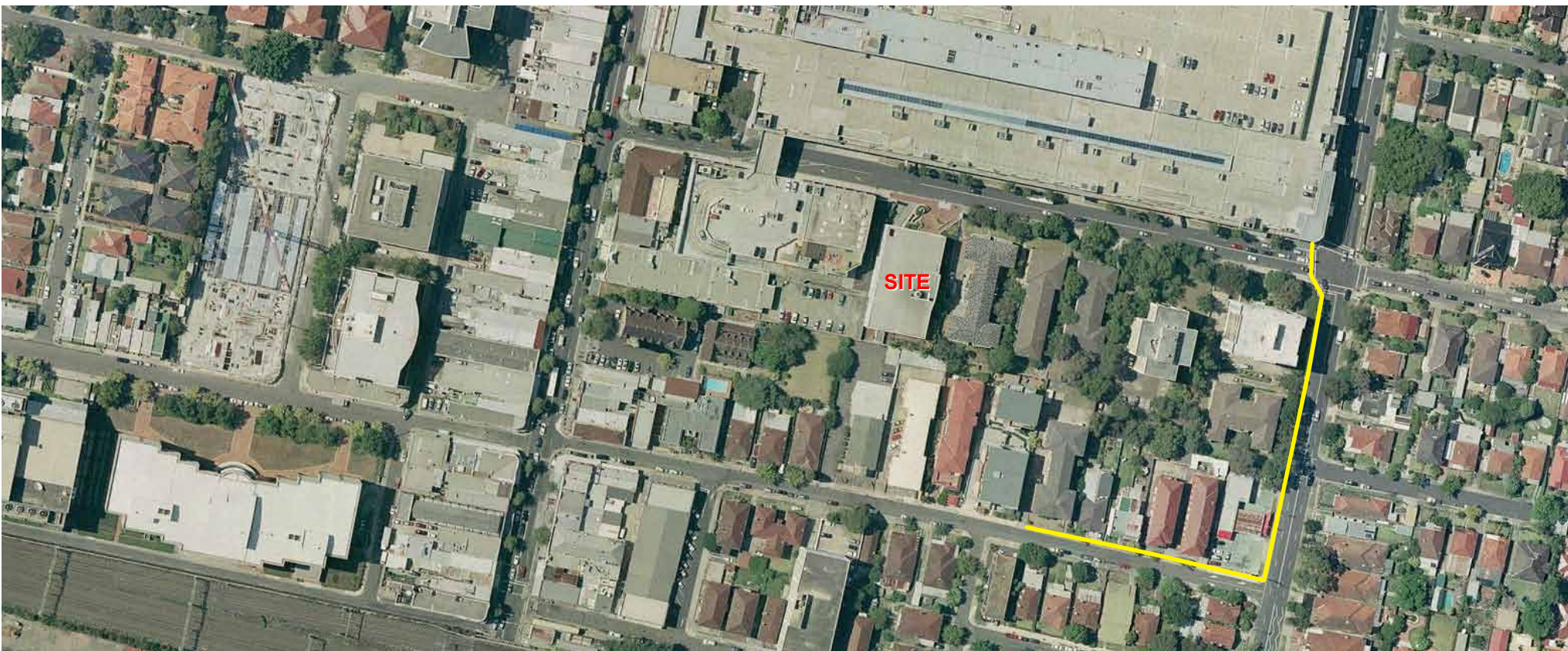


F. MARY ST TO WESTFIELD VICTORIA ST ENTRANCE = 332M





G. GEORGE ST (MID POINT BETWEEN 29 GEORGE ST & SHAFTSBURY AVE) TO WESTFIELD VICTORIA ST ENTRANCE VIA MARY ST AND PROPOSED PEDESTRIAN LINK = 272M



H. GEORGE ST (MID POINT BETWEEN 29 GEORGE ST & SHAFTSBURY AVE) TO WESTFIELD SHAFTSBURY AVE ENTRANCE = 243M